

the tea cozy

2018 LYS Square

Materials: 1 ball worsted weight yarn
#8 needles

Approximate size, blocked: 12" square

Gauge: 4½ sts/inch

Shadow Cable:

(Multiple of 12 sts + 2)

Rows 1 and 5 (RS): Knit.

Row 2 and all WS rows: Purl.

Row 3: K1 *6-st left cable, k6; rep from *, end k1.

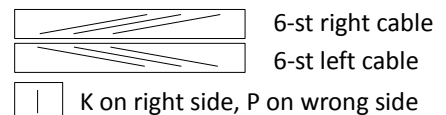
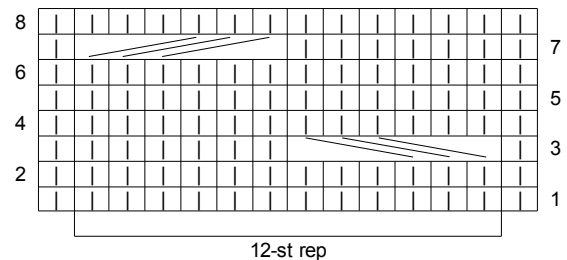
Row 7: K1, *k6, 6-st right cable; rep from *, end k1.

Row 8: Purl.

Rep rows 1-8.

6-st right cable: Sl 3 sts to cn and hold to back of work, k3, k3 from cn.

6-st left cable: Sl 3 st to cn and hold to front of work, k3, k3 from cn.



Instructions:

Cast on 54sts. Work 7 rows Garter Stitch.

Inc Row: K6, (M1, K2, M1, K3) 9x, K3. (72sts)

Keep the 5 sts at each edge in Garter stitch and work Shadow Cable on the center 62sts. Continue until piece measures about 10 ½", ending with Row 8.

Dec Row: K5, (K2tog, K1, K2tog, K2) 9x, K4. (54sts)

Knit 7 rows Garter Stitch.

Bind off.